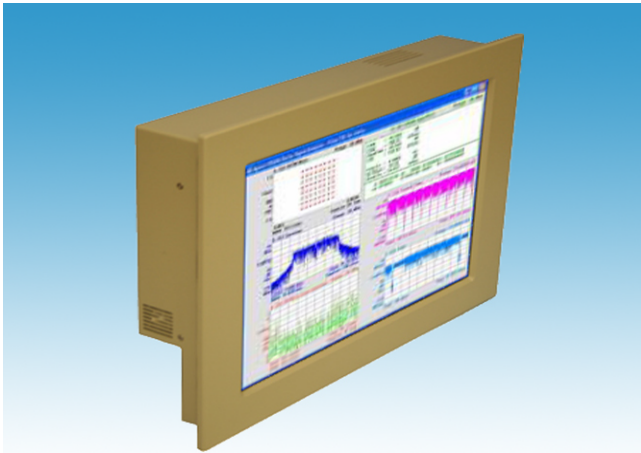


PPC-19

19" Touch Screen Panel PC with Core2 Duo Processor, SXGA (1280x1024) Graphics, 1GB memory and 160GB HDD



Features

- 19" SXGA (1280x1024) TFT display with 16.7M colours, high contrast ratio and extremely wide viewing angle (178 degrees horizontal & vertical)
- High-speed Core2 Duo processor from 2.0 - 2.4GHz
- Durable, High Resolution Resistive Touchscreen
- I/O ports include 4xUSB, 2xEthernet, 2xIEEE1394, VGA, DVI, HDTV out, 1xRS232/422/485, 1xRS232, SPDIF, HD 7.1 Audio, PS/2 keyb & mouse
- 160GB SATA HDD and 1GB memory as standard
- Fan cooled enclosure for increased reliability
- Mains Input 100-240V AC (optional DC 12V,24V or 48V)
- Expansion options include 2x mini-PCI card slots and 2x32-bit PCI slots
- Rugged construction and IP65 sealed for harsh industrial environments

Description

The PPC-19 is a 19" XGA(1280x1024) Panel PC with Touch Screen. The rugged construction, modern styling and technical features make it ideal for both commercial and industrial use. Typical applications include Instrument Operator Panels, Machine Control, Factory Automation, POS & POI terminals, Kiosks and Control & Monitoring Systems.

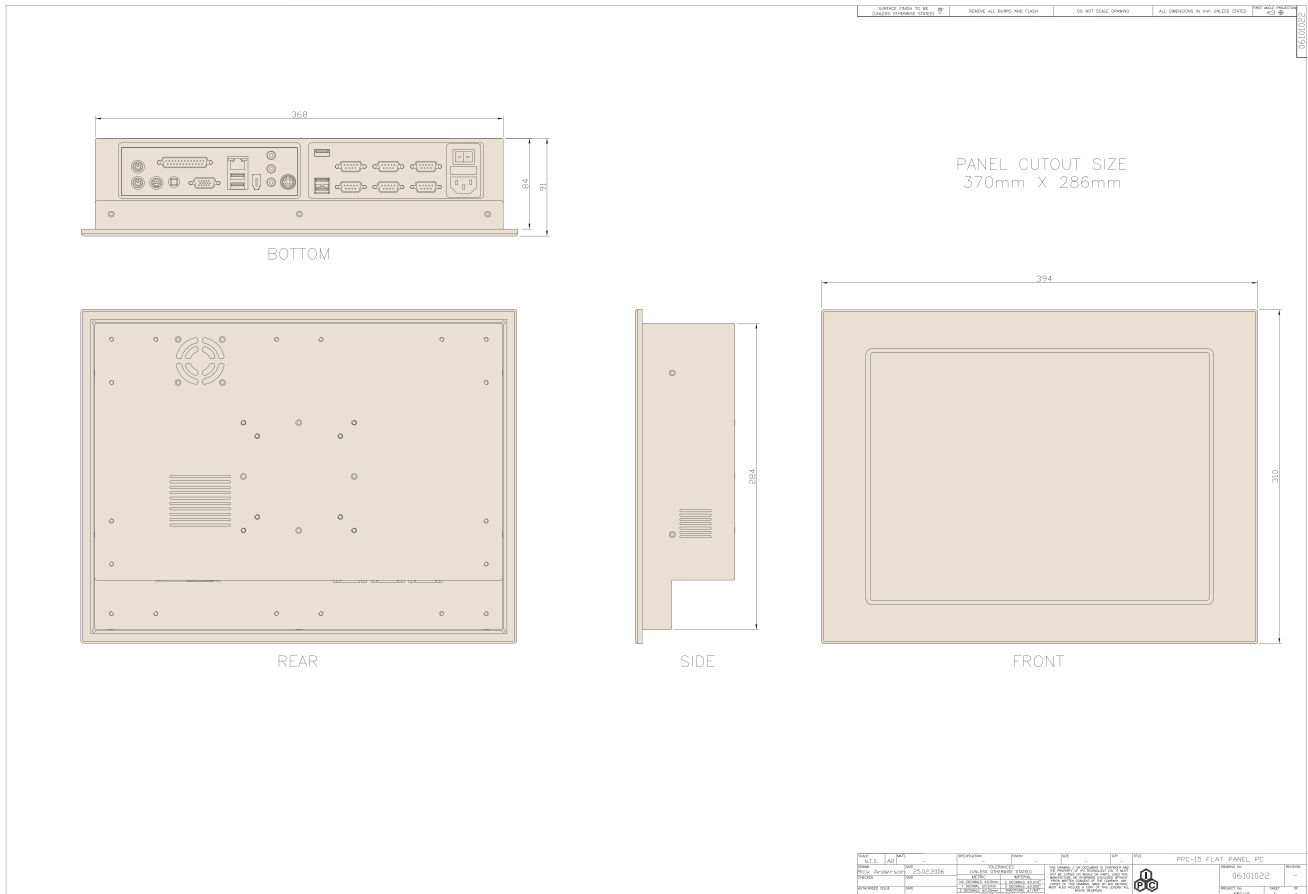
The PPC-19 supports high-speed Core2 Duo processors from 2.0-2.4GHz with up to 3GB of on-board memory. It has a 19" high brightness TFT display with 1280x1024 resolution and up to 16.7M colours. A 160GB 2.5" hard drive and 1GB memory are fitted as standard and both can be easily expanded. The touch screen is a high resolution 8-wire resistive type with a durability of more than 30 million operations. The unit is supplied with an autoswitching 110/240V AC power input as standard with options for 12V, 24V and 48V DC operation. The PPC-19 has a comprehensive range of I/O ports and expansion is provided by two internal mini-PCI card slots for expansion cards such as comms cards, modems, GPS, video capture, wifi etc. Expansion options include two 32-bit PCI slots. Support is provided for a wide range of operating systems including DOS, Win98/NT4/2000/XP/Vista/Windows 7, Embedded XP, Linux and QNX.

The PPC-19 is constructed from corrosion resistive steel with an aluminium front bezel sealed to IP65 and finished in Black as standard. The unit has a 75mm and 100mm VESA standard mount and can be panel, wall, desktop or swing arm mounted. Since it is manufactured by IPC in the UK it can be easily customised (colour, logos, mounting, Flash Disks etc.) to suit most applications.

Specifications

Single Board Computer		Drives		
Processor Card	LV-679D	Floppy Drive	None	
CPU	Core2 Duo 2.0 - 2.4GHz	CD/DVD	CD/DVD writer	
Memory	1GB Standard (3GB Max.)	Hard Drive	160GB 2.5" Drive Installed	
Graphics	Integrated Intel GMA X3100 Graphics	Miscellaneous	Compact Flash or DOM(DiskOnModule)	
Network	2x10/100/1000 Base-T Ethernet	Power		
Audio	High Definition 7.1 Audio, AC'97 compatible	Consumption	Typical 80W	
Miscellaneous	On-board Watchdog Timer	Mains Input Voltage	81 -264 VAC autoswitching 50/60Hz	
I/O Ports	4xUSB, 2xLAN, VGA, DVI, COM1, COM2,	Optional DC Input	12V ,24V or 48V	
	2xIEEE1394, HD 7.1 Audio, SPDIF, Printer, HDTV out, PS/2 keyb & mouse	Expansion Slots		
Display		(Mini-PCI, PCI, PCIe,ISA, PC/104, Compact Flash etc.)	2xMini-PCI (on-board)	
	Size		2x32-bit PCI slots (optional)	
	Resolution		Mounting Options	
	Viewing Angle	19"		Panel Mounting (4 x Panel Mounting Brackets)
	Contrast Ratio	SXGA (1280x1024)		75 and 100mm VESA Mount
Luminance	178 degrees (horiz. & vert.)	Operating Conditions		
Colours	1000:1	Temperature	0 to 50° (operating) -20 to 70° (non-operating)	
Touchscreen	Type	8-wire resistive	Humidity	10 - 90% (non-condensing)
	Resolution	1024 x 1024	Shock	10G (operating) 30G (non-operating)
	Transmissivity	80%	MTBF	
	Durability	>30 million operations		>50,000 hrs
	Interface	RS232 or USB	Physical Characteristics	
Software Support	Drivers for Win 2000, XP, VISTA & Windows 7	Overall Dimensions (W x H x D)	436mm x 368mm x 96mm	
		Panel Cut Out (W x H)	412 x 344 mm	
		Weight (kg)	10.5kg	

Dimensions



Ordering Information

Each PPC-19 is configured to meet the customers specifications. The part numbering system and an example configuration are shown below:

PPC-19-32100-22348 (example) 19" SXGA(1280x1024) Panel PC, AC Mains Input, USB touchscreen, Black finish, Panel Mounting, Core2 Duo 2.4GHz, 2GB memory, 500GB HDD and Vista Home Premium.

PPC-19-XXXXX-XXXXX

