

PPC-15

15" Touch Screen Panel PC with High Speed Core2 Duo, XGA(1024x768) Graphics, 1GB memory and 160GB HDD



Features

- 15" XGA (1024x768) Colour TFT display with 16.7M colours
- High-speed Core2 Duo processor from 2.0 - 2.4GHz
- Durable, High Resolution Resistive Touchscreen
- I/O ports include 4xUSB, 2xEthernet, 2xIEEE1394, HD 7.1 Audio, SPDIF, 1xRS232/422/485, 1xRS232, TV-out, Printer, VGA, PS/2 keyboard & mouse
- 160GB SATA HDD and 1GB memory as standard - easily upgraded
- Fan cooled enclosure for increased reliability
- Mains Input 100-240V AC (optional DC 12V or 24V)
- Expansion options include 2xPCI slots and 2xmini-PCI card slots
- Rugged construction and IP65 sealed for harsh industrial environments
- Can be customised to suit specific applications (colours, logos etc.)

Description

The PPC-15 is a 15" XGA(1024x768) Panel PC with Touch Screen. The rugged construction, modern styling and technical features make it ideal for both commercial and industrial use. Typical applications include Instrument Operator Panels, Machine Control, Factory Automation, POS & POI terminals, Kiosks and Control & Monitoring Systems.

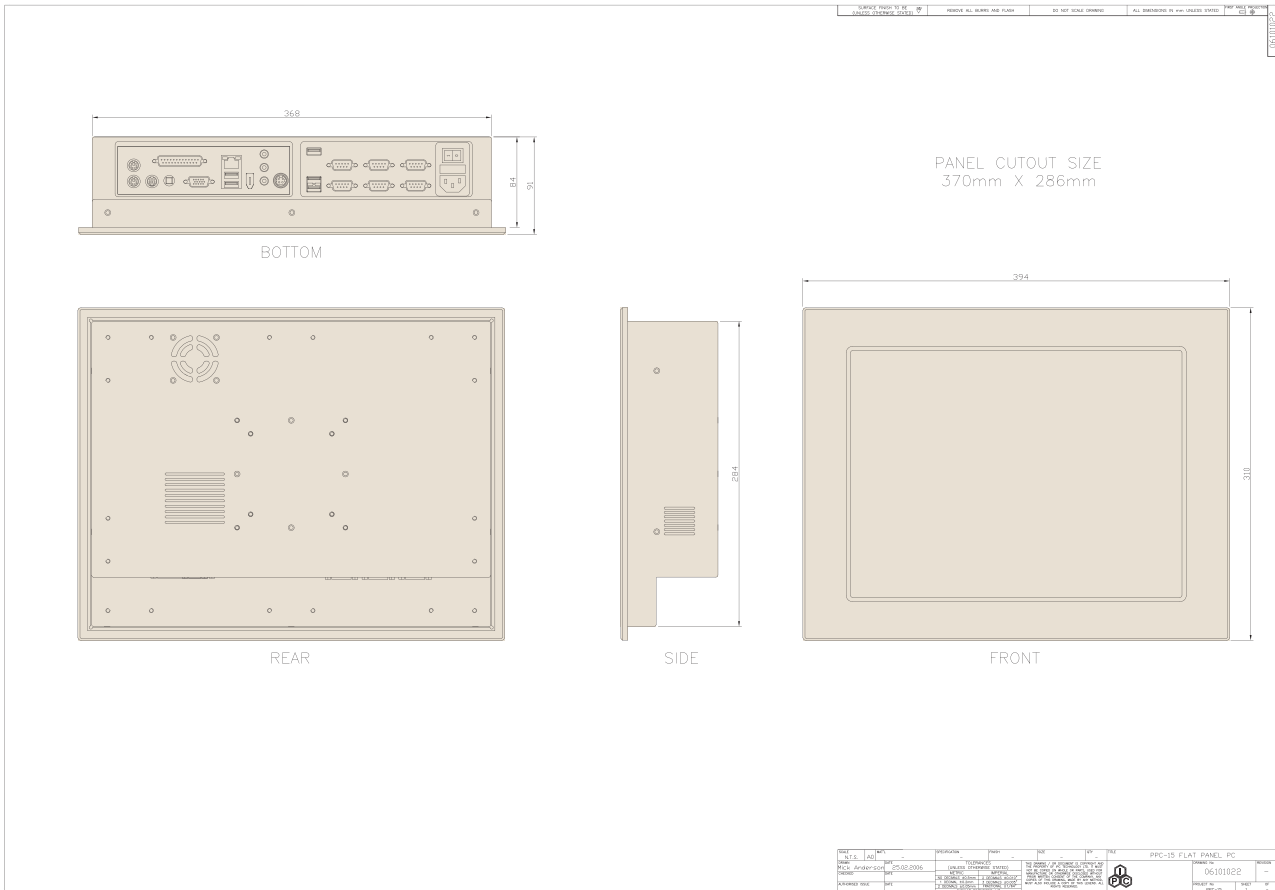
The PPC-15 supports high-speed Core2 Duo processors from 2.0-2.4GHz with up to 3GB of on-board memory. It has a 15" high brightness TFT display with 1024x768 resolution and up to 16.7M colours. A 160GB 2.5" hard drive and 1GB memory are fitted as standard and both can be easily expanded. The touch screen is a high resolution 8-wire resistive type with a durability of more than 30 million operations. The unit is supplied with an autoswitching 110/240V AC power input as standard with options for 12V, 24V and 48V DC operation. The PPC-15 has a comprehensive range of I/O ports and expansion is provided by two internal mini-PCI card slots for expansion cards such as modems, GPS, video capture, wifi etc. Expansion options include two 32-bit PCI slots and 4 additional RS232 ports if required. Support is provided for a wide range of operating systems including DOS, Win98/NT4/2000/XP/Vista/Windows 7, Embedded XP, Linux and QNX.

The PPC-15 is constructed from corrosion resistive steel with an aluminium front bezel sealed to IP65 and finished in Black as standard. The unit has a 75mm and 100mm VESA standard mount and can be panel, wall, desktop or swing arm mounted. Since it is manufactured by IPC in the UK it can be easily customised (colour, logos, mounting, Flash Disks etc.) to suit most applications.

Specifications

Single Board Computer		Drives	
Processor Card	LV-679D	Floppy Drive	None
CPU	Core2 Duo 2.0 - 2.4GHz	CD/DVD	CD/DVD writer
Memory	1GB Standard (3GB Max.)	Hard Drive	160GB 2.5" SATA Drive Installed
Graphics	Integrated Intel GMA X3100 Graphics	Miscellaneous	Compact Flash or DOM(DiskOnModule)
Network	2x10/100/1000 Base-T Ethernet	Power	
Audio	High Definition 7.1 Audio, AC'97 compatible	Consumption	Typical 60W
Miscellaneous	On-board Watchdog Timer	Mains Input Voltage	81 -264 VAC autoswitching 50/60Hz
I/O Ports	4xUSB, 2xLAN, VGA, DVI, COM1, COM2, 2xIEEE1394, 7.1 Audio, SPDIF, Printer, HDTV out, PS/2 keyboard & mouse	Optional DC Input	12V ,24V or 48V
		Expansion Slots	
Display	Size 15" Resolution XGA (1024x768) Viewing Angle 170 degrees (horiz. & vert.) Contrast Ratio 400:1 Luminance 350 cd/sq.m Colours 16.7M	(Mini-PCI, PCI, PCIe, ISA, PC/104, Compact Flash etc.)	2xMini-PCI 2x32-bit PCI slots (optional)
		Mounting Options	
		Panel Mounting (4 x Panel Mounting Brackets) 75mm and 100mm VESA Mount	
		Operating Conditions	
		Temperature 0 to 50° (operating) -20 to 70° (non-operating) Humidity 10 - 90% (non-condensing) Shock 10G (operating) 30G (non-operating)	
Touchscreen	Type 8-wire resistive Resolution 1024 x 1024 Transmissivity 80% Durability >30 million operations Interface RS232 or USB Software Support Drivers for Win 2000, XP, VISTA & Windows 7	MTBF	
		>50,000 hrs	
		Physical Characteristics	
		Overall Dimensions (W x H x D)	394 x 310 x 78 mm
		Panel Cut Out (W x H)	371 x 287 mm
Weight (kg)	7.0kg		

Dimensions



Ordering Information

Each PPC-15 is configured to meet the customers specifications. The part numbering system and an example configuration are shown below:

PPC-15-32100-22338 15" XGA(1024x768) Panel PC, AC Mains Input, USB touchscreen, Black finish, Panel Mounting, Core2 Duo 2.4GHz, 2GB memory, 500GB HDD and Vista Home Premium.
(example)

PPC-15-XXXXX-XXXXX

