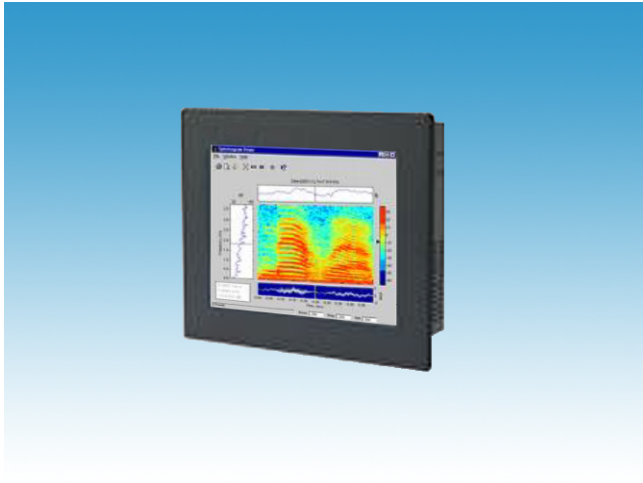


# PPC-12

**12.1" Touch Screen Panel PC with Celeron M/Core2 Duo, up to XGA Graphics, 1GB memory and 160GB SATA HDD**



## Features

- 12.1" SVGA(800x600) or XGA(1024x768) TFT display 16.7M Colours
- Low-power Celeron M or high-speed Core2 Duo processor
- Durable, High Resolution Resistive Touchscreen
- I/O ports include 3xUSB, Ethernet, Printer, AC'97 Audio, 1xRS232/422/485, 1xRS232, VGA, PS/2 keyboard & mouse
- 160GB SATA HDD and 1GB memory as standard
- Fan cooled enclosure for increased reliability
- Mains Input 100-240V AC (optional DC 12V,24V or 48V)
- Expansion via 1xmini-PCI socket (serial ports,modem,video capture,wifi etc.)
- Rugged construction and IP65 sealed for harsh industrial environments
- Can be customised to suit specific applications (colours, logos, etc.)

## Description

The PPC-12 is a 12.1" Panel PC with Touch Screen. The rugged construction, modern styling and technical features make it ideal for both commercial and industrial use. Typical applications include Instrument Operator Panels, Machine Control, Factory Automation, POS & POI terminals, Kiosks and Control & Monitoring Systems.

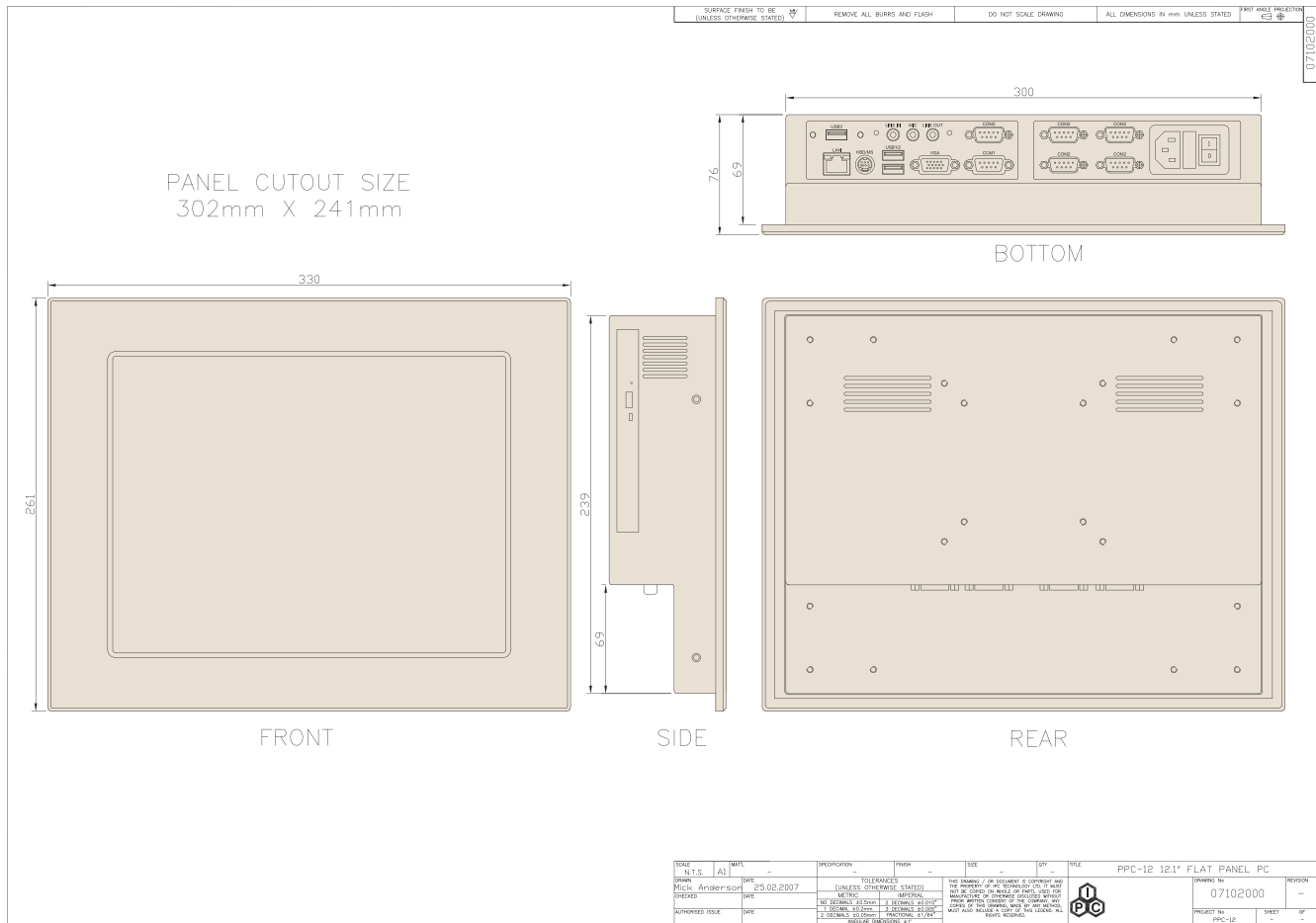
The PPC-12 supports processors from Low Power Celeron M to high-speed Core2 Duo with up to 2GB of on-board memory. It has a 12.1" high brightness TFT display with options for SVGA (800x600) or XGA (1024x768) resolution and up to 16.7M colours. A 160GB 2.5" hard drive and 1GB memory are fitted as standard and both can be easily expanded. The touch screen is a high resolution 8-wire resistive type with a durability of more than 30 million operations. The unit is supplied with an autoswitching 110/240V AC power input as standard with options for 12V, 24V and 48V DC operation. The PPC-12 has a comprehensive range of I/O ports and has a single mini-PCI card slot for expansion cards such as modems, GPS, video capture, wifi etc. Support is provided for a wide range of operating systems including DOS, Win98/NT4/2000/XP/Vista/Windows 7, Embedded XP, Linux and QNX.

The PPC-12 is constructed from anti-corrosive steel with an aluminium front bezel sealed to IP65 and finished in Black as standard. The unit has a 75mm and 100mm VESA standard mount and can be panel, wall, desktop or swing arm mounted. Since it is manufactured by IPC in the UK it can be easily customised (colour, logos, mounting, Flash Disks etc.) to suit most applications.

## Specifications

<b>Single Board Computer</b>		<b>Drives</b>	
Processor Card	LS-371E	Floppy Drive	None
CPU	Celeron M or Core2 Duo 1.6 - 2.0GHz	CD/DVD	CD/DVD Writer
Memory	1GB Standard (2GB Max.)	Hard Drive	160GB 2.5" Drive Installed
Graphics	Integrated Intel GMA950 Graphics	Miscellaneous	Compact Flash or DOM(DiskOnModule)
Network	1x10/100/1000 Base-T Ethernet	<b>Power</b>	
Audio	High Definition Audio, AC'97 compatible	Consumption	Typical 45W
Miscellaneous	On-board Watchdog Timer	Mains Input Voltage	81 -264 VAC autoswitching 50/60Hz
<b>I/O Ports</b>		Optional DC Input	12V, 24V or 48V
3xUSB, LAN, VGA, COM1,COM2,Printer, Audio AC'97, PS/2 keyb& mouse		<b>Expansion Slots</b>	
<b>Display</b>		(Mini-PCI, PCI, PCIe,ISA, PC/104, Compact Flash etc.)	1xMini-PCI socket
Size	12.1"	<b>Mounting Options</b>	
Resolution	SVGA (800x600) or XGA (1024x768)	Panel Mounting (4 x Panel Mounting Brackets) and 100mm & 75mm VESA Mount	
Viewing Angle	140 degrees min. (horiz. & vert.)	<b>Operating Conditions</b>	
Contrast Ratio	600:1	Temperature	0 to 50° (operating) -20 to 70° (non-operating)
Luminance	400 cd/sq.m	Humidity	10 - 90% (non-condensing)
Colours	262K - 16.7M	Shock	10G (operating) 30G (non-operating)
<b>Touchscreen</b>		<b>MTBF</b>	
Type	8-wire resistive	>50,000 hrs	
Resolution	1024 x 1024	<b>Physical Characteristics</b>	
Transmissivity	80%	Overall Dimensions (W x H x D)	330 x 261 x 76 mm
Durability	>30 million operations	Panel Cut Out (W x H)	302 x 241 mm
Interface	RS232 or USB	Weight (kg)	5.5kg
Software Support	Drivers for Win 2000, XP & VISTA		

# Dimensions



# Ordering Information

Each PPC-12 is configured to meet the customers specifications. The part numbering system and an example configuration are shown below:

**PPC-12-32000-22237** 12.1" XGA(1024x768) Panel PC, AC Mains Input, USB touchscreen, RAL7032 finish, Panel mounting, Core2 Duo T7200 2.0GHz, 2GB memory, 320GB HDD and XP pro.  
(example)

