

Features

- 15" XGA (1024x768) Colour TFT display with 16.2M colours
- High Brightness & Contrast
- Analog VGA & Digital DVI inputs
- S-video & Composite video inputs(PAL, NTSC & SECAM formats)
- Digital On Screen Display (OSD)
- Internal Stereo Speakers
- Optional USB or RS232 touchscreen
- Touchscreen drivers for DOS, Win 98/NT4/2000/XP/Vista, eXP, Linux, QNX, etc.
- Mains Input 100-240V AC (optional DC 12V or 24V)
- Rugged construction and IP65 sealed for harsh industrial environments
- Customised versions (Stainless Steel Bezels, 19" Rackmount, Colours etc.)

Description

The FPM-15 is a 15" XGA (1024x768) PC monitor with optional touchscreen. It's rugged construction, modern styling and technical features make it ideal for both commercial and industrial use. Typical applications include Instrument Operator Panels, Machine Control, Factory Automation, Security Systems, CCTV displays, POS & POI displays, Kiosk displays and Control & Measurement Systems.

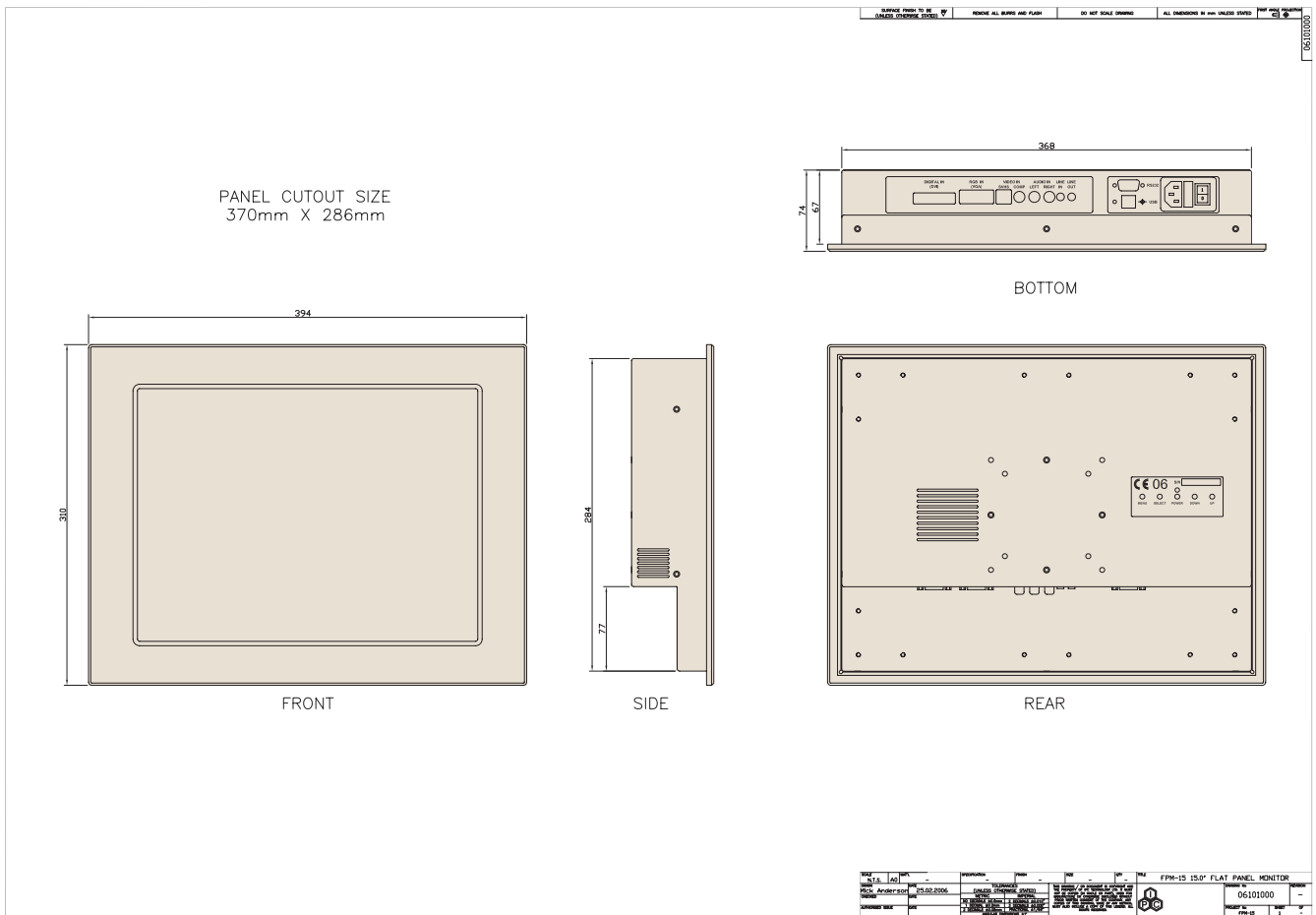
The FPM-15 has a digital On Screen Display (OSD) to adjust all of the PC and video input functions including brightness, contrast, colour temperature, sharpness, position, frequency, phase etc. Two internal speakers are provided for PC audio or video audio signals. The PC input is either analog VGA or digital DVI and the video input uses s-video or composite connectors. The video source can be in PAL, NTSC or SECAM format. The FPM-15 accepts mains inputs from 100 - 240V AC as standard, but can also be supplied with optional DC inputs of 12V or 24V. The optional touchscreen is a high resolution 8 wire resistive type with a durability of >30 million touches and can be supplied with either a USB or RS232 interface. Software driver support is available for DOS Win98/NT4/2000/XP/Vista, embedded XP, Linux, QNX etc.

The FPM-15 is constructed from corrosion resistive steel with an aluminium front bezel sealed to IP65 and finished in Black as standard. The unit has a 75mm & 100mm VESA standard mount and can be panel, wall, desktop or swing arm mounted. Because of the modular design and since it is manufactured by IPC in the UK it can be easily customised to suit most applications.

Specifications

LCD Display		On Screen Display (OSD)	
Size	15"	PC Functions	Brightness, Contrast, Colour Temp., Freq. & Phase, Status, Position, Size, Language, Sharpness.
Resolution	XGA (1024x768)	Video Functions	Brightness, Contrast, Colour, Tint, Video Format, Position, Size, Language, Sharpness.
Colours	16.2M	Power	
Luminance	300 cd/sq.m	Consumption	Typical 40W
Contrast Ratio	500:1	Mains Input Voltage	100 -240 VAC autoswitching 50/60Hz
Viewing Angle	140 degrees (horiz. & vert.)	Optional DC Input	12V or 24V
Input Signals		Mounting Options	
PC Input Format	Analog VGA or Digital DVI	Panel Mounting - 4 x Panel Mounting Brackets	
PC Input Connector	15 way high density D female & 24 pin DVI-D female	VESA Mounting - 75mm & 100mm	
PC Audio Line In Connector	3.5mm stereo jack socket	Operating Conditions	
Video Input Format	PAL, NTSC, SECAM	Temperature	0 to 50° (operating) -20 to 70° (non-operating)
Video Inputs	S-video (mini-din), composite video (phono), Audio Right(phono), Audio Left(phono)	Humidity	10 - 90% (non-condensing)
Touchscreen		Shock	10G (operating) 30G (non-operating)
Type	8-wire resistive	MTBF	
Resolution	4096 x 4096	>50,000 hrs	
Transmissivity	80%	Physical Characteristics	
Durability	>30 million operations	Overall Dimensions (W x H x D)	330 x 261 x 74 mm
Interface	RS232 or USB	Panel Cut Out (W x H)	302 x 241 mm
Software Support	Drivers for DOS, Win 98/NT4/2000/XP/Vista, embedded XP, Linux, QNX etc.	Weight (kg)	6.0kg

Dimensions



Ordering Information

Each FPM-15 is configured to meet the customers specifications. The part numbering system and an example configuration are shown below:

FPM-15-3100 (example) 15" (1024x768) PC Monitor, AC Mains Input, RS232 touchscreen, RAL7032 (PC Grey) finish and Panel mounting.

